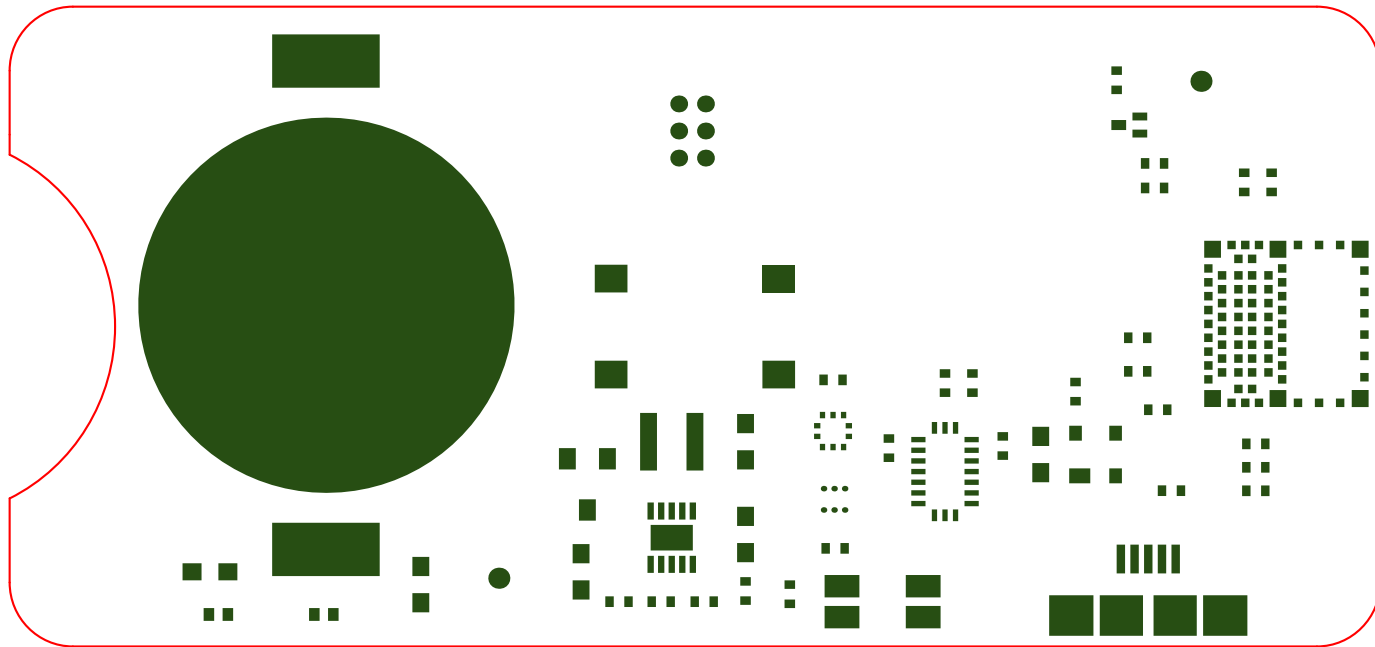
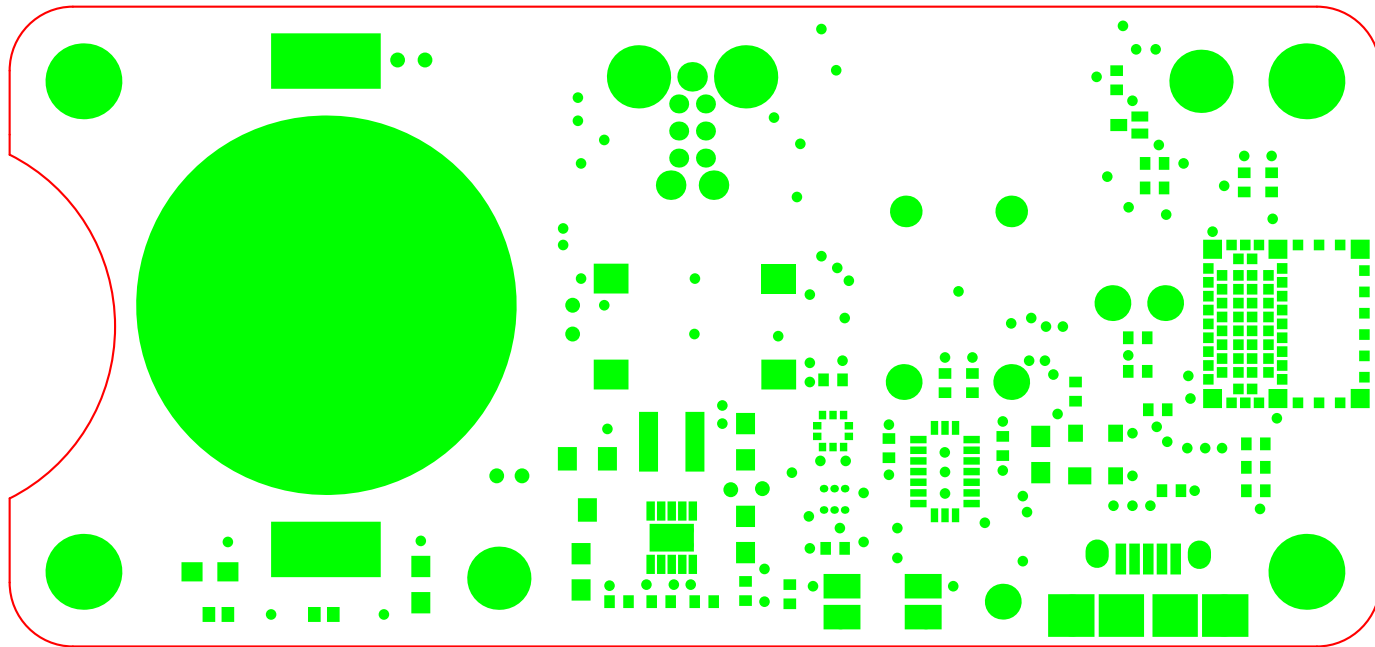


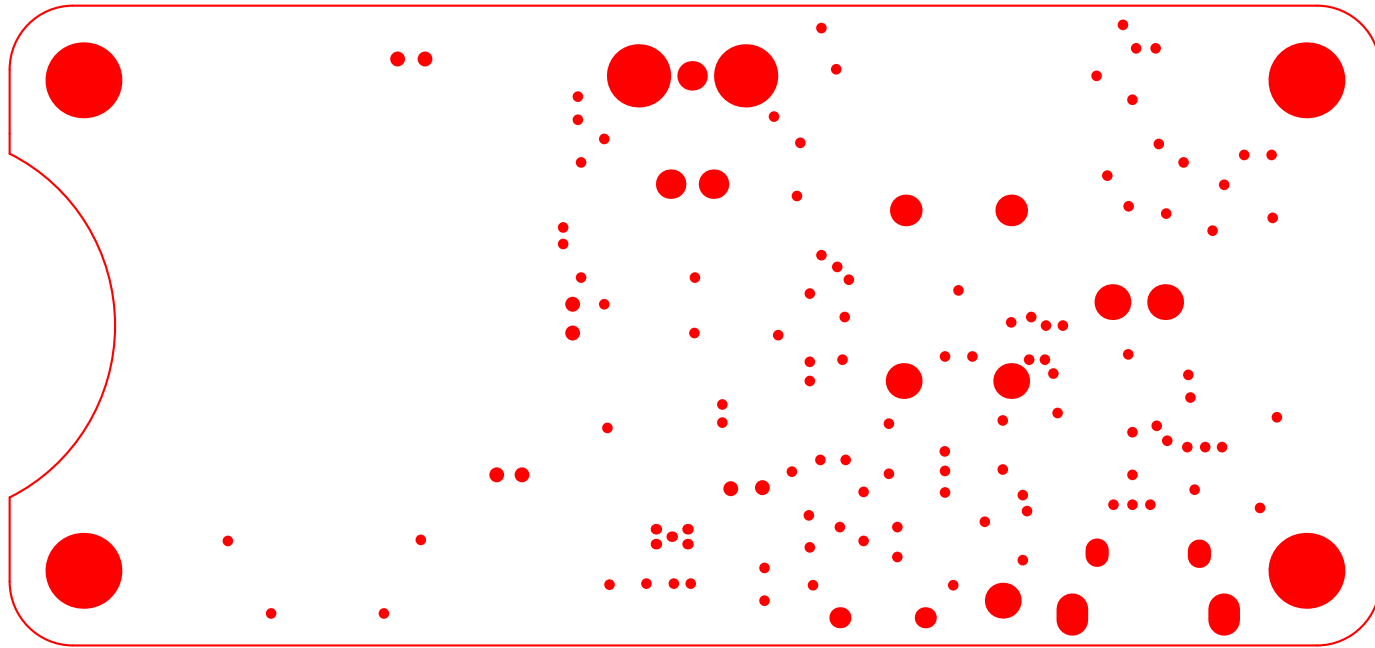
025a\ot:icasl\:\qttrH

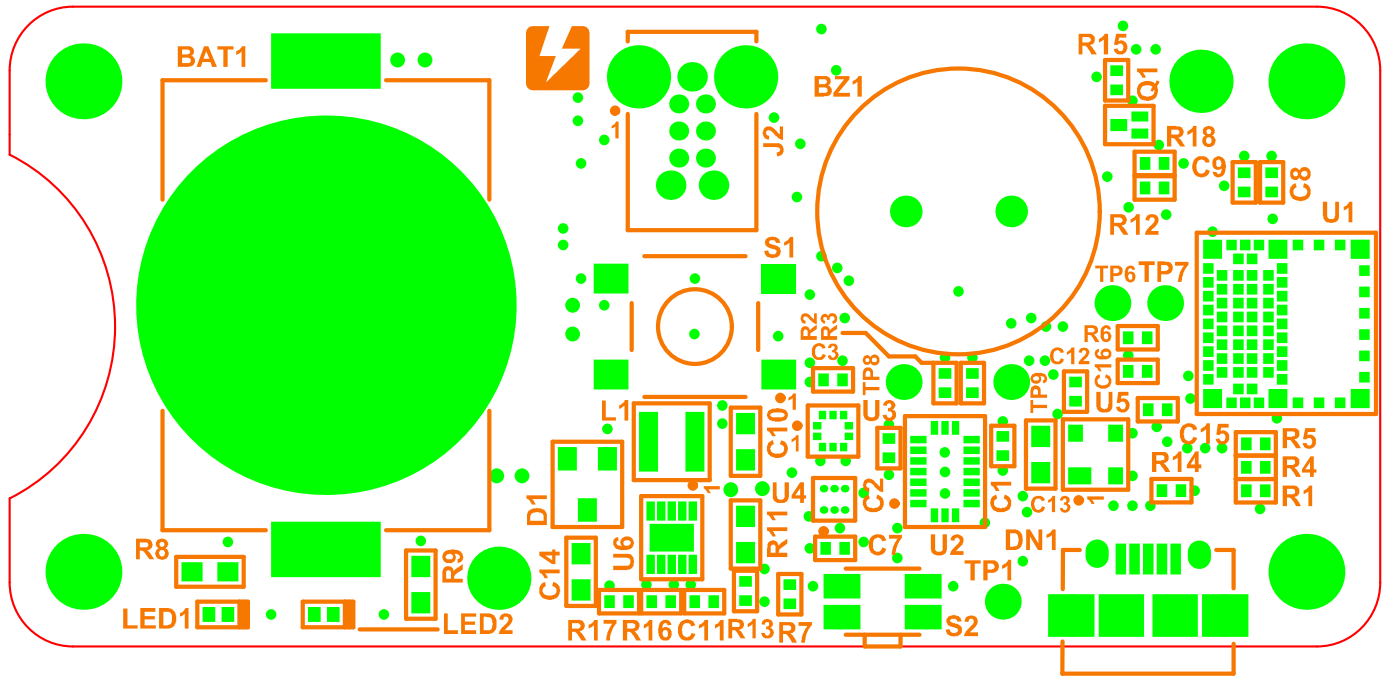
BGE-22 qev posiq Wlifi 2euzor

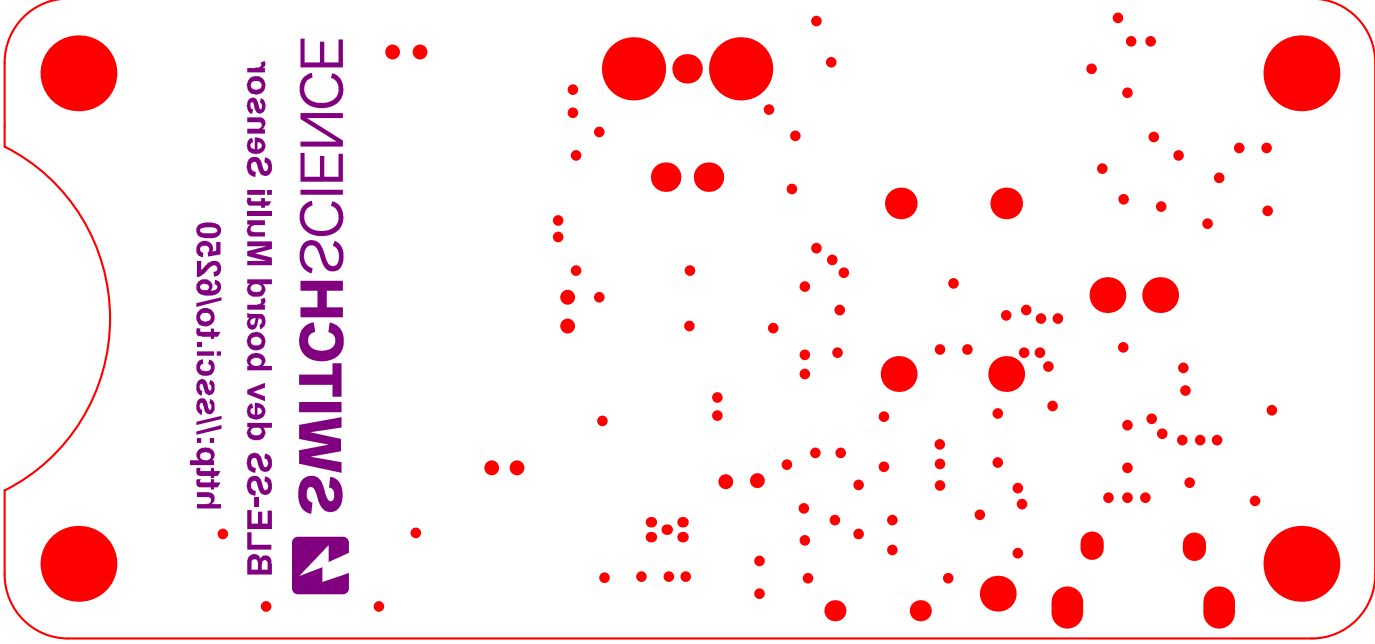
 SWITCHSCIENCE











02Sa\ot:ica2a\l:qtrn

BGE-22 dev board Mini Sensor

 SWITCHSCIENCE

Symbol	Count	Hole Size	Plated	Hole Type
✱	2	0.600mm (23.62mil)	PTH	Slot
⊕	2	0.650mm (25.59mil)	NPTH	Round
■	2	0.900mm (35.43mil)	PTH	Round
□	2	0.900mm (35.43mil)	PTH	Slot
⊙	2	2.400mm (94.49mil)	NPTH	Round
⊗	3	1.000mm (39.37mil)	NPTH	Round
▼	4	3.000mm (118.11mil)	NPTH	Round
◇	5	0.300mm (11.81mil)	NPTH	Round
▽	5	1.000mm (39.37mil)	PTH	Round
⊗	8	0.500mm (19.69mil)	PTH	Round
○	102	0.300mm (11.81mil)	PTH	Round
	137 Total			

Slot definitions : Routed Path Length = Calculated from tool start centre position to tool end centre position.
Hole Length = Routed Path Length + Tool Size = Slot length as defined in the PCB layout

